

## Macclesfield District General Hospital Emergency Department Monthly Bulletin: April 2011 to March 2012

This bulletin provides a breakdown of all injury attendances at Macclesfield District General Hospital Emergency Department (ED) between April 2011 and March 2012.

Between April 2011 and March 2012 there were 25,749 ED attendances. Injury attendances peaked in July (n=2,587), with February (n=1,637) having the least number of injury attendances (**Figure 1**).

For most months there were slightly more male injury attendances than female presenting at Macclesfield District General Hospital ED (52%).

**Figure 2** presents the age group of injury attendances. Across the whole year, injury attendances were highest for individuals aged 30-59 years (32%).

**Table 1** details the injury group of injury attendances. The majority of injury attendances were classified as other injury (86%) and 7% were recorded as sports injury.

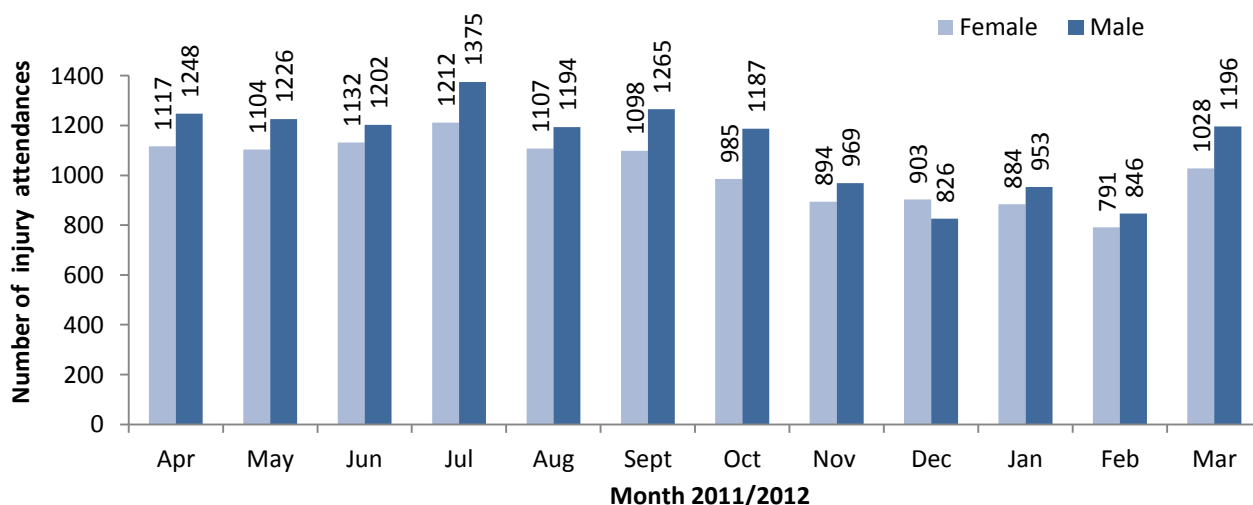
**Table 2** illustrates the source of referral for patients presenting with injuries. The majority (75%) of injury attendees self-referred.

**Table 3** presents injury attendances by location of incident. Nearly half (48%) of all injury locations were recorded as other and 24% recorded as public place.

**Table 4** shows the discharge destination of injury attendances. Almost four in ten (37%) attendees were discharged without requiring any follow-up; whilst over one in five (21%) were discharged requiring follow-up treatment.

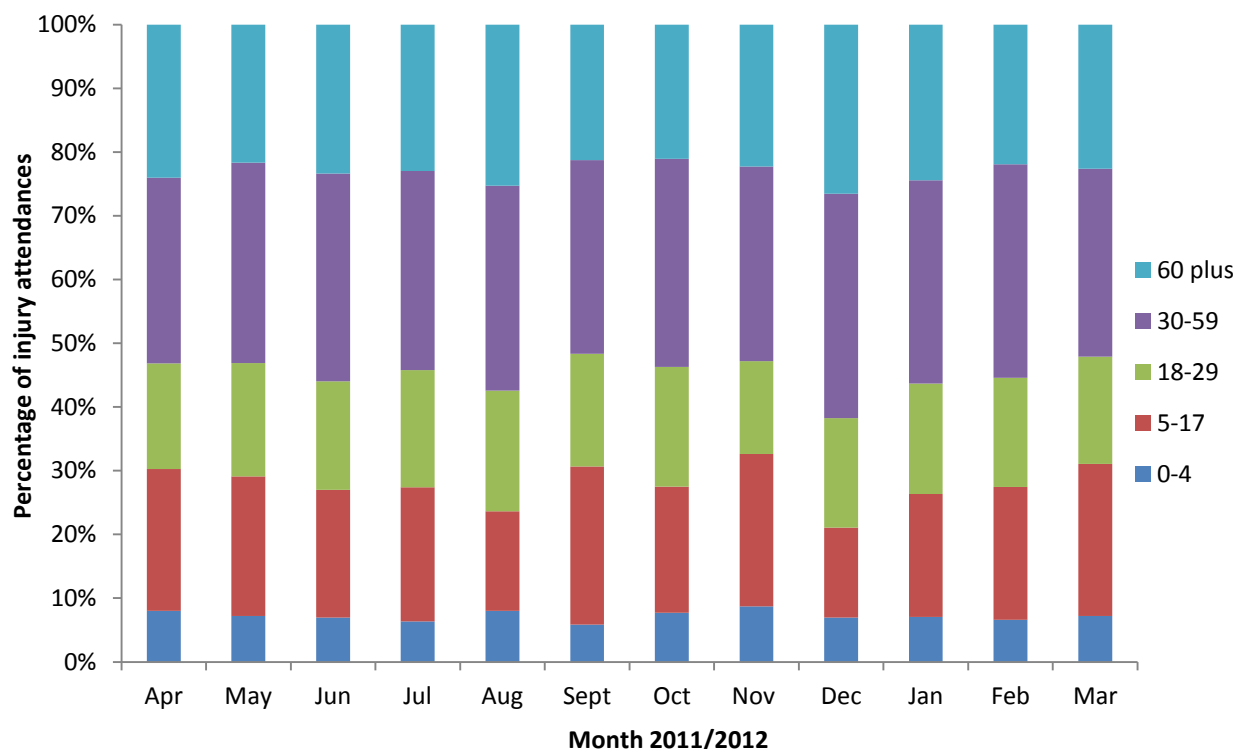
Assault attendees presenting at Macclesfield District General Hospital ED between April 2011 and March 2012 were mainly male (74%) and over four in ten (45%) were aged between 18 and 29 years of age. **Table 5** shows the primary location of assault was recorded as other (52%). Over a third (35%) of assaults were recorded as occurring in a public place.

**Figure 1: Gender of injury attendances by month, April 2011 to March 2012<sup>1</sup>**



<sup>1</sup> There were 7 attendances where gender was recorded as unknown

**Figure 2: Age group of injury attendances by month, April 2011 to March 2012**



**Table 1: Injury attendances by injury group, April 2011 to March 2012<sup>2</sup>**

Injury group	Apr	May	Jun	Jul	Aug	Sep	Oct	Nov	Dec	Jan	Feb	Mar	Total	%
Other injury	2018	2009	2006	2204	1999	2029	1806	1581	1495	1585	1419	1881	22032	86
Sports injury	190	151	136	182	121	171	165	136	71	108	113	184	1728	7
Road traffic collision	53	81	76	66	97	68	91	57	57	49	33	59	787	3
Deliberate self-harm	42	44	60	60	41	57	46	51	47	53	41	49	591	2
Assault	52	39	<55	65	<40	<38	<63	<41	59	42	31	<52	571	2
Firework injury	12	6	***	10	***	***	***	***	0	0	0	***	40	0
<b>Total</b>	<b>2367</b>	<b>2330</b>	<b>2335</b>	<b>2587</b>	<b>2301</b>	<b>2363</b>	<b>2172</b>	<b>1866</b>	<b>1729</b>	<b>1837</b>	<b>1637</b>	<b>2225</b>	<b>25749</b>	<b>100</b>

**Table 2: Injury attendances by source of referral, April 2011 to March 2012**

Source of referral	Apr	May	Jun	Jul	Aug	Sep	Oct	Nov	Dec	Jan	Feb	Mar	Total	%
Self referral	1749	1732	1706	1869	1617	1786	1627	1448	1280	1405	1255	1755	19229	75
Other	334	322	366	413	402	345	338	245	331	289	236	288	3909	15
Health care provider	207	199	176	223	212	149	147	124	62	100	105	122	1826	7
General medical practitioner	51	46	42	48	48	57	39	30	36	28	29	30	484	2
Police	12	12	25	19	17	15	10	<6	15	8	***	15	157	1
Work	8	8	9	10	5	***	7	6	5	***	5	***	74	0
Educational establishment	***	9	10	5	***	7	***	5	***	***	***	11	62	0
Unknown	***	***	***	***	***	***	***	***	***	***	***	***	<7	0
Local authority social services	***	***	***	***	***	***	***	***	***	***	***	***	***	0
<b>Total</b>	<b>2367</b>	<b>2330</b>	<b>2335</b>	<b>2587</b>	<b>2301</b>	<b>2363</b>	<b>2172</b>	<b>1866</b>	<b>1729</b>	<b>1837</b>	<b>1637</b>	<b>2225</b>	<b>25749</b>	<b>100</b>

<sup>2</sup> Please note that all numbers less than five have been suppressed in line with patient confidentiality and if there is only one number in a category then two numbers will be suppressed at the next level (e.g. <6) in order to prevent back calculations from totals.

**Table 3: Injury attendances by incident location, April 2011 to March 2012\*\***

Incident location	Apr	May	Jun	Jul	Aug	Sep	Oct	Nov	Dec	Jan	Feb	Mar	Total	%
Other	1145	1058	1159	1236	1000	1100	956	895	872	933	880	1162	12396	48
Public place	591	591	510	637	678	638	637	427	364	374	336	479	6262	24
Home	449	449	446	510	501	393	393	363	347	330	274	361	4816	19
Work	114	120	137	132	<120	126	113	85	<95	109	79	115	1343	5
Educational establishment	68	112	83	72	***	106	73	96	<53	91	68	108	932	4
<b>Total</b>	<b>2367</b>	<b>2330</b>	<b>2335</b>	<b>2587</b>	<b>2301</b>	<b>2363</b>	<b>2172</b>	<b>1866</b>	<b>1729</b>	<b>1837</b>	<b>1637</b>	<b>2225</b>	<b>25749</b>	<b>100</b>

\*\*There were 6 attendances where location was unknown, these have been included under 'other'

**Table 4: Injury attendances by discharge destination, April 2011 to March 2012\*<sup>3</sup>**

Discharge destination	Apr	May	Jun	Jul	Aug	Sep	Oct	Nov	Dec	Jan	Feb	Mar	Total	%
Discharged - did not require any follow-up treatment	801	858	871	965	869	930	839	657	622	700	586	772	9470	37
Discharged – follow-up treatment by GP	497	460	472	521	523	462	458	405	387	368	354	515	5422	21
Admitted to a hospital bed	331	270	252	301	237	257	188	198	239	207	148	210	2838	11
Referred to fracture clinic	242	271	256	263	237	267	222	207	166	206	208	279	2824	11
Referred to A&E Clinic	237	229	236	241	214	196	206	195	127	165	192	238	2476	10
Referred to other out-patient clinic	130	131	134	143	140	120	126	98	97	88	59	98	1364	5
Left department before being treated	41	40	46	59	22	39	49	39	23	33	31	39	461	2
Other	36	28	19	30	18	32	30	24	20	21	20	28	306	0
Referred to other HCP	24	15	23	29	16	37	27	25	12	15	14	24	261	1
Transferred to other HCP	19	16	13	19	16	13	19	10	24	21	16	13	199	1
Left department having refused treatment	<10	<12	<14	<17	<10	<10	<9	<8	<13	<14	<9	<9	123	0
Died in department	***	***	***	***	***	***	***	***	***	***	***	***	5	0
<b>Total</b>	<b>2367</b>	<b>2330</b>	<b>2335</b>	<b>2587</b>	<b>2301</b>	<b>2363</b>	<b>2172</b>	<b>1866</b>	<b>1729</b>	<b>1837</b>	<b>1637</b>	<b>2225</b>	<b>25749</b>	<b>100</b>

\*Due to rounding, percentages may not add up to 100.

**Table 5: Location of assault for assault attendances, April 2011 to March 2012\***

Incident location	Apr	May	Jun	Jul	Aug	Sep	Oct	Nov	Dec	Jan	Feb	Mar	Total	%
Other	36	18	33	33	19	18	26	16	33	20	19	25	296	52
Public place	12	15	15	28	16	16	25	20	16	13	7	17	200	35
Home	***	***	***	***	***	***	8	***	6	***	***	***	33	6
Work	***	***	***	***	***	***	***	***	***	***	***	6	26	5
Educational establishment	***	***	***	***	0	***	***	0	***	***	***	***	16	3
<b>Total</b>	<b>52</b>	<b>39</b>	<b>54</b>	<b>65</b>	<b>39</b>	<b>37</b>	<b>62</b>	<b>40</b>	<b>59</b>	<b>42</b>	<b>31</b>	<b>51</b>	<b>571</b>	<b>100</b>

\*Due to rounding, percentages may not add up to 100.

Published August 2012

Johnathan Rooney (TIIG officer), Val Upton (Senior Public Health Researcher / Analyst)  
 Centre for Public Health, Faculty of Health and Applied Social Sciences, Liverpool John Moores University  
 2<sup>nd</sup> Floor, Henry Cotton Campus, 15-21 Webster Street, Liverpool, L3 2ET  
 Tel: 0151 231 4539 Email: [j.rooney@ljmu.ac.uk](mailto:j.rooney@ljmu.ac.uk)  
 Website: [www.tiig.info](http://www.tiig.info) (please note all data requests should be made through the TIIG website)

<sup>3</sup> GP-General practitioner, HCP – Health care provider